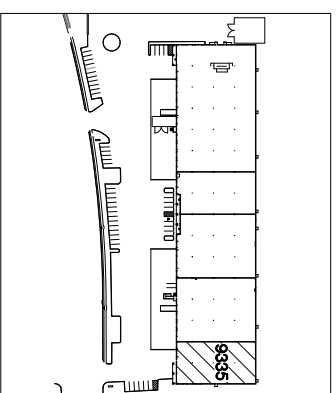


**WILLOWBROOK BUSINESS CENTER**  
**9335 MILLSVIEW RD**  
**Houston, Texas 77070**



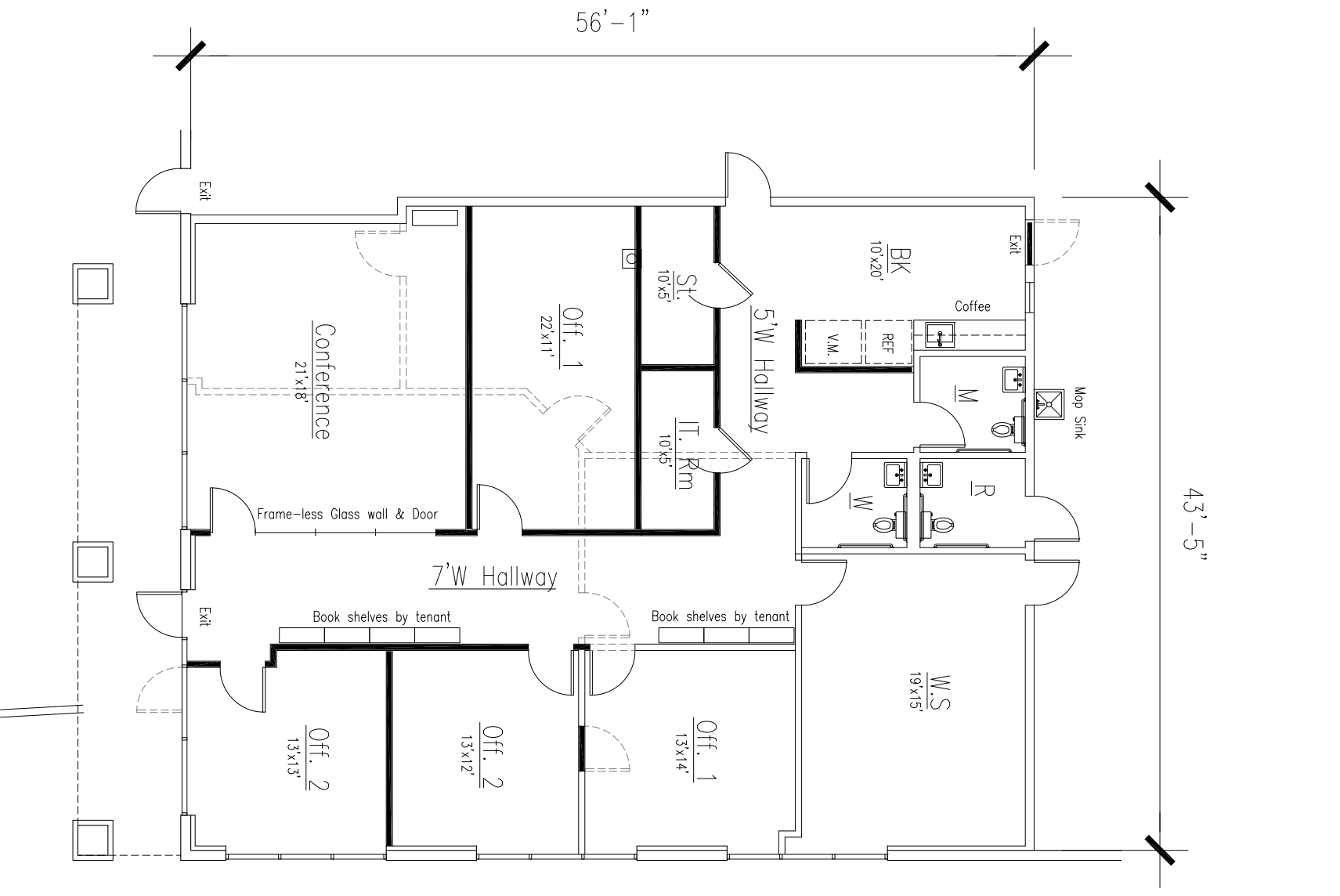
**LOCATION MAP**

**BUILDING SUMMARY**

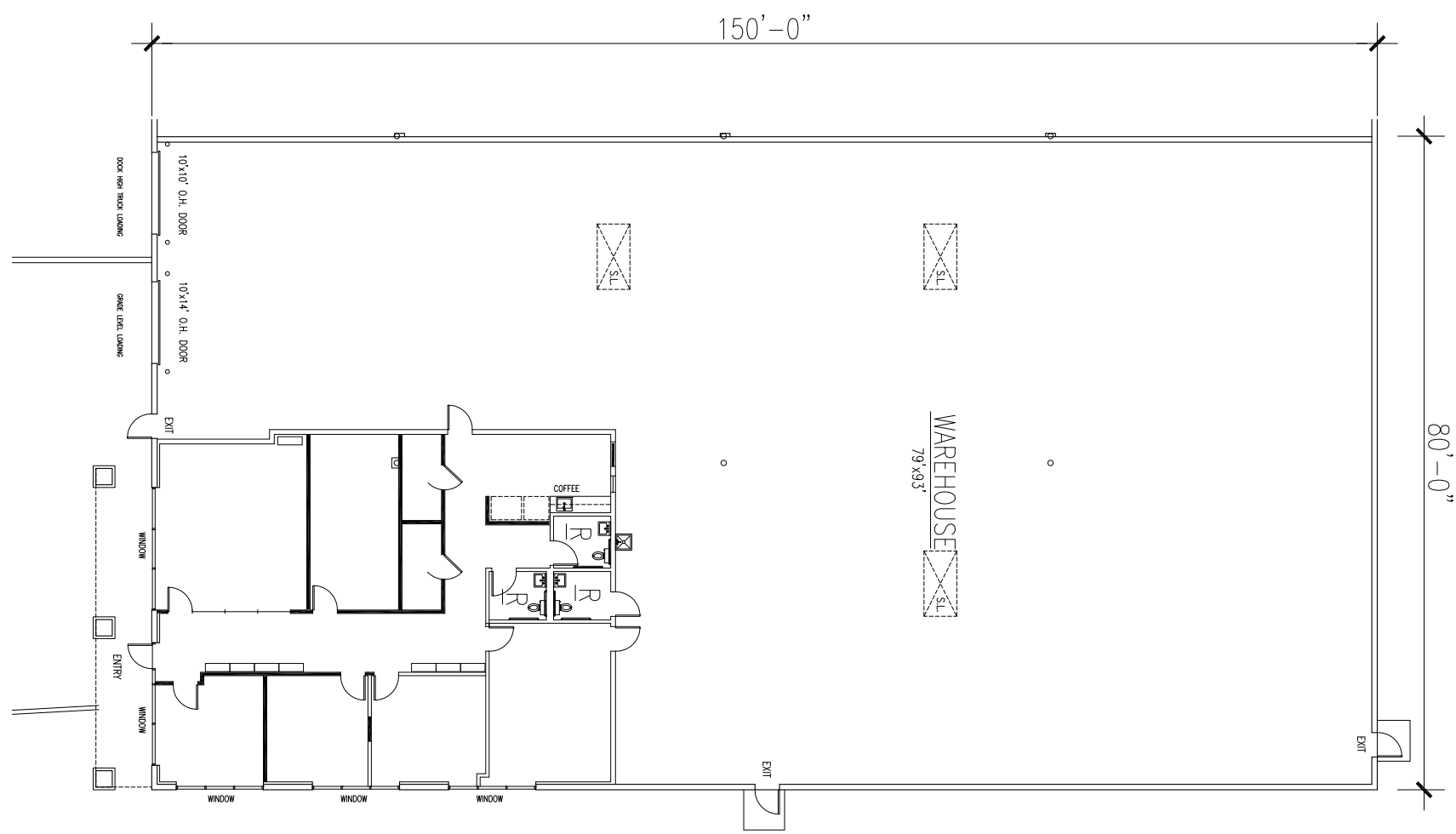
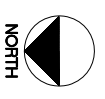
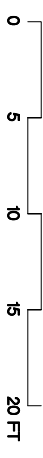
OFFICE AREA	2,466 SQ. FT.
WAREHOUSE	9,535 SQ. FT.
<b>TOTAL</b>	<b>12,000 SQ. FT.</b>

**BUILDING FEATURES**

- MASTER PLANNED BUSINESS PARK
- EASY ACCESS TO 249 PKWY AND BELTWAY 8
- (1) DOCK HIGH FRONT LOADING DOORS
- (1) GRADE LEVEL FRONT LOADING DOORS
- 24' CLEAR HEIGHT w/ SKYLIGHTS
- SECURITY LIGHTING
- CONCRETE TILT WALL CONSTRUCTION
- ALL CONCRETE PAVING
- 100% FIRE SPRINKLED



**PROPOSED OFFICE FLOOR PLAN**



**SUITE 9335 FLOOR PLAN**

